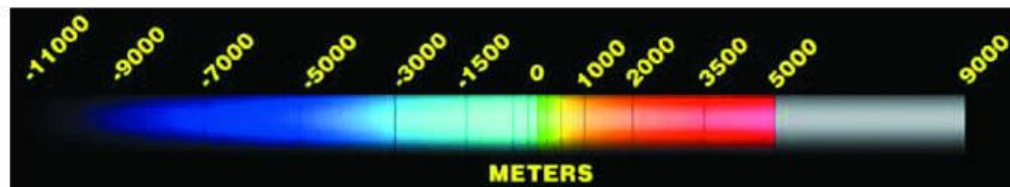
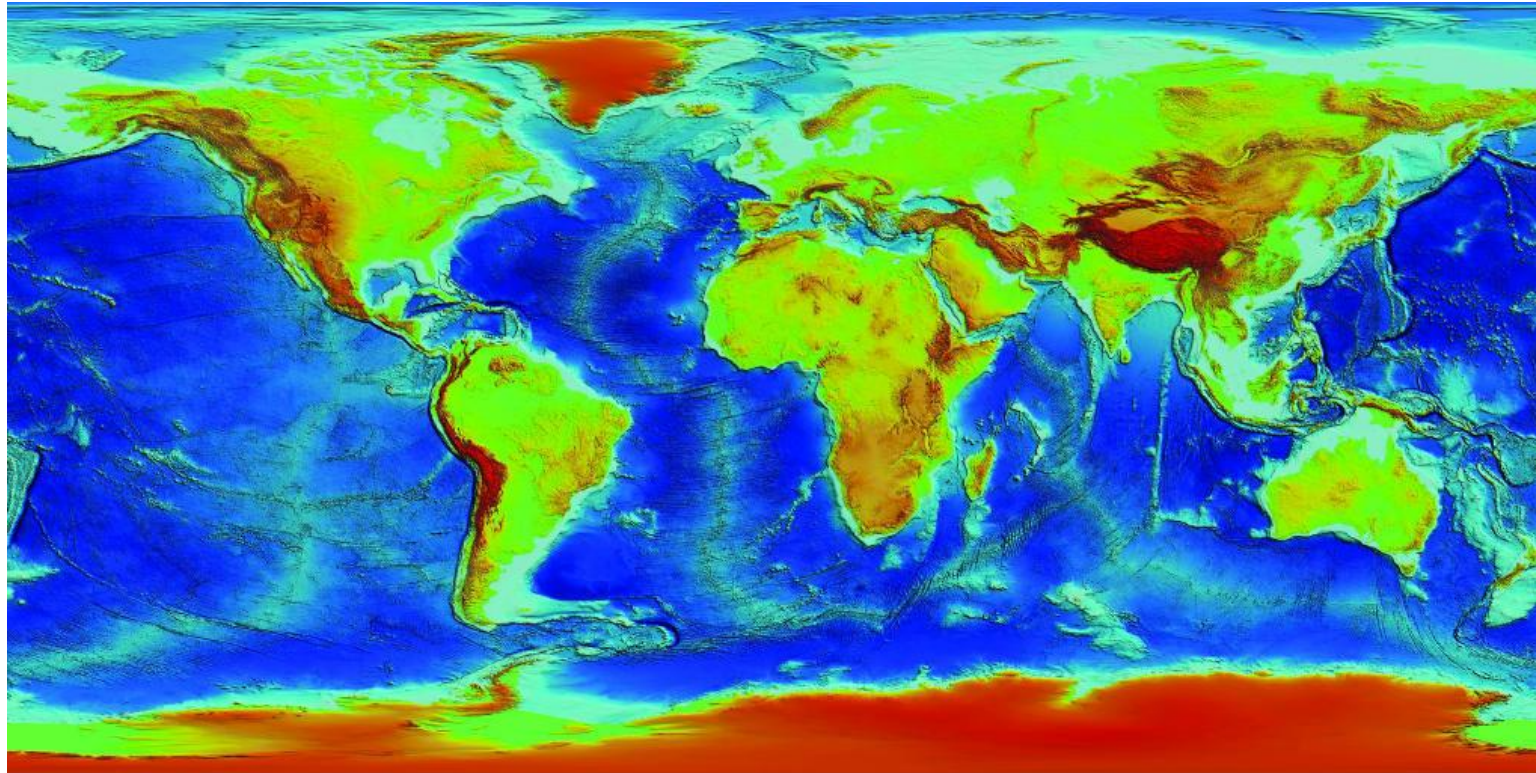




Explore the Seafloor Introduction

Read “Study Spotlight: Echolocation” on page 102 in the “Marine Science: The Dynamic Ocean” textbook and answer the following questions:

1. What is echolocation?
2. What type of organisms use echolocation?
3. Why do organisms use echolocation?
4. How can underwater noise pollution effect animals that use echolocation?



Explore the Seafloor Guided Practice

As a group read pages 98 – 106 in the “Marine Science: The Dynamic Ocean” textbook.

Answer questions 7 – 15 as your group. Be sure to record your answers in your own words on your individual papers.

As a group continue reading pages 107 – 110 in your textbook about “Bathymetry and Marine Animals.”

Answer question 16 – 17 as a group. Be sure to record your answers in your own words on your individual papers.

Explore the Seafloor Independent Practice

1. If it takes 32 seconds for sound sent from a ship to the seafloor to return to the ship, what is the sea depth at the ship's location?
2. The ocean is largely unexplored. Explain why this statement is true.
3. Describe two modern technologies that allow scientists to explore the seafloor today.
4. Identify the seafloor features labeled (A – D) on the image.

